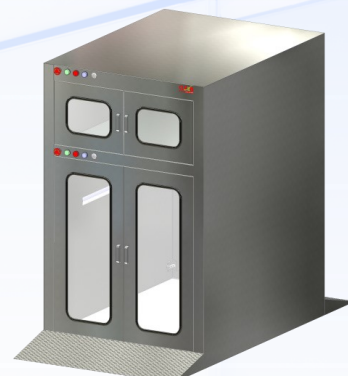
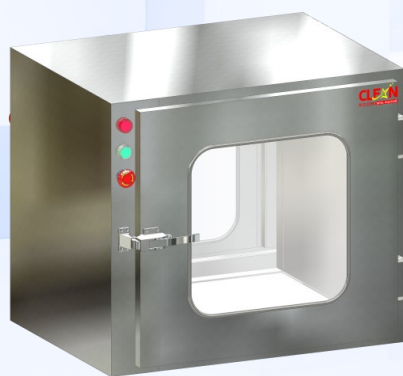


PASS BOX **HỘP CHUYỀN HÀNG**

APPLICATION

- PHARMACEUTICAL FACTORY
- FOOD FACTORY
- COSMETICS FACTORY
- ELECTRONICS SEMICONDUCTOR



OUR PRODUCTS

- CLEANROOM EQUIPMENT : PASS BOX, AIR SHOWER, CLEAN BOOTH, CLEAN BENCH.
- LABORATORY EQUIPMENT : LAMINAR AIR FLOW WORK STATIONS, FUME HOODS, BIOLOGICAL SAFTY CABINETS, PHARMA ISOLATOR.
- CLEANROOM FURNITURE : STAFF LOCKER, SHOE RACK, GOWNING BENCHES, TABLE, TROLLEY, STEP STOOLS, DUST BIN, BUCKET, SCOOP, RACK, SINK, VESSEL STORAGE.

OUR SERVICES

- CLEANROOM SOLUTION : CONSULTANT, DESIGN
- CLEANROOM CONSTRUCTION : CIVIL, MECHANICAL AND ELECTRICAL

CUSTOMERS



CRV PASS BOX

DESCRIPTION

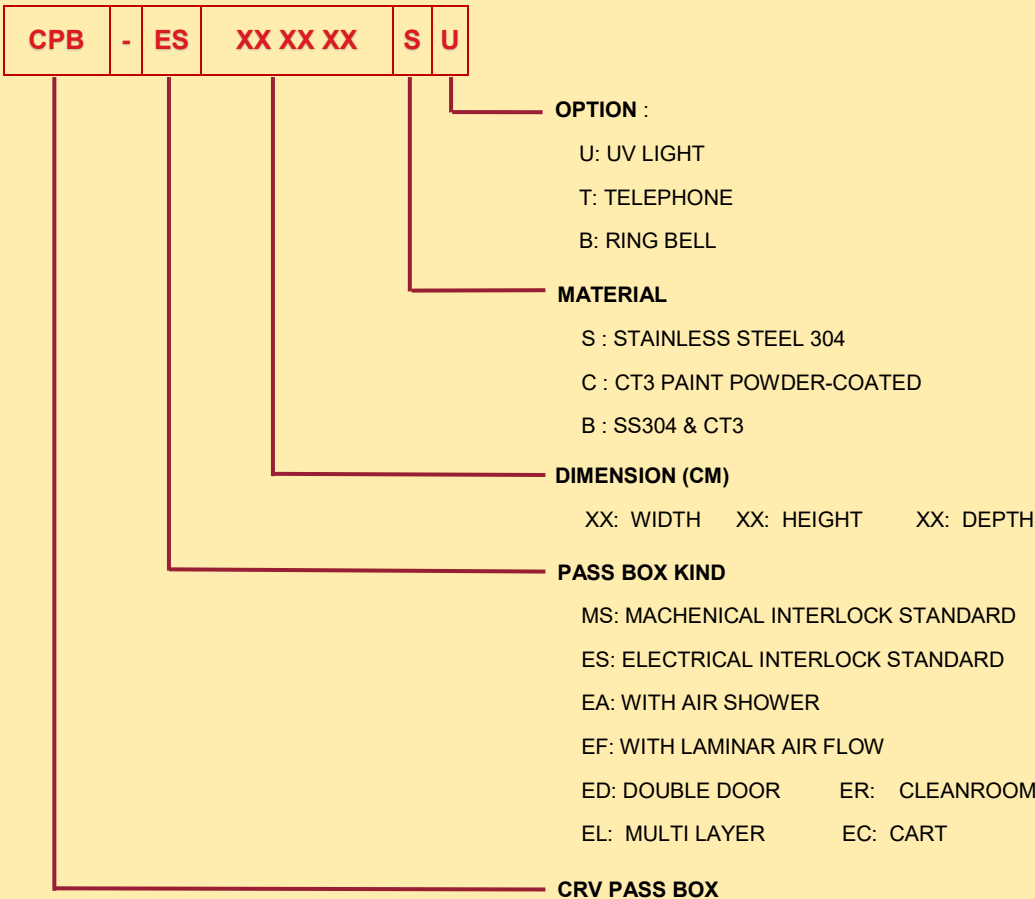
- ◆ Pass Box facilitates the transfer of work items in and out of the Cleanroom. Pass Box is essential for the swift transfer of goods and to minimize the movement of personnel unnecessary human traffic in and out from Cleanroom. All CRV products are manufactured for the most demanding controlled environment applications.
- ◆ All components are designed for maximum chemical resistance and enhanced durability for a long service life.
- ◆ Electrical interlock is reliable, maintenance-free, fail safe and maintains clean-room integrity by preventing both doors from being opened at the same time.
- ◆ The main body of the pass box is constructed of industrial-grade electrogalvanized steel or stainless steel 304
- ◆ The pass box base surface is constructed of stainless steel, making the work zone easy to clean
- ◆ Tempered glass doors provide a clear view of the internal chamber.

MAIN FEATURE

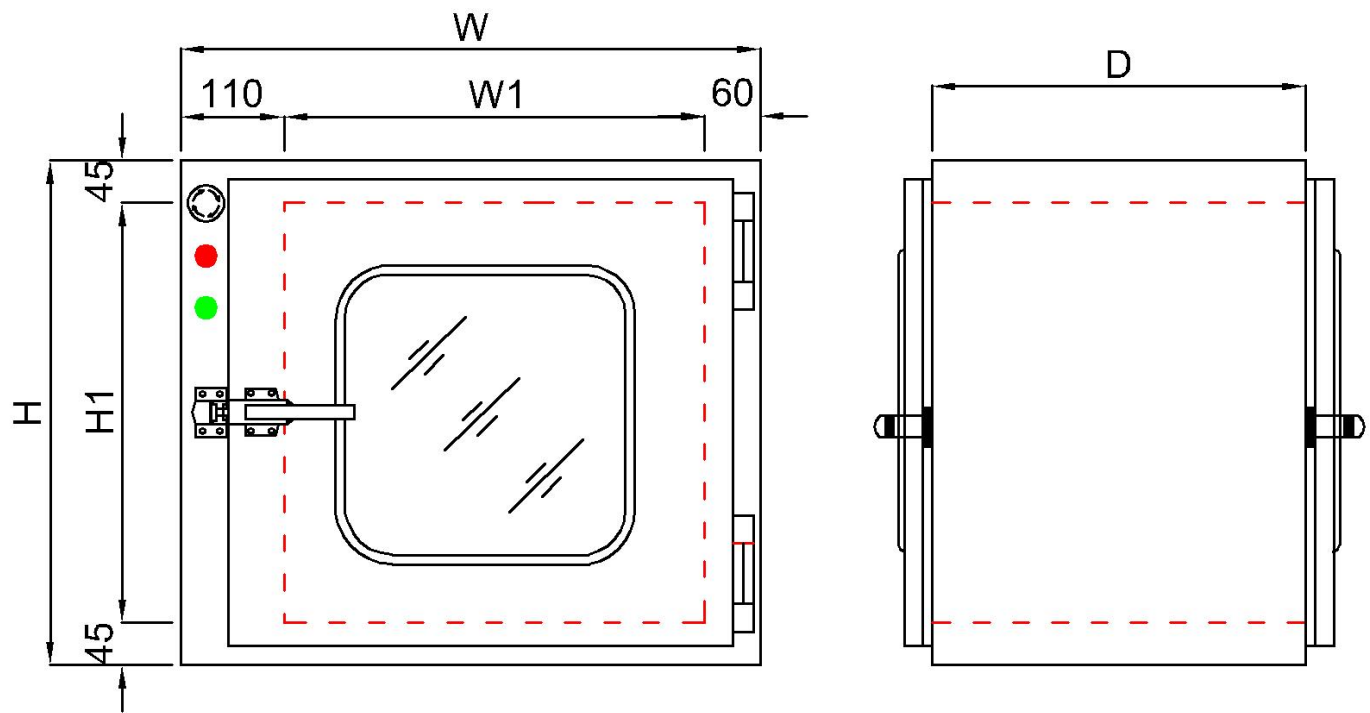
Pass Box is supporting equipment for clean room and workshop. It can be used for passing the wares between CR to CR or CR to non-clean room. It can decrease effectively the open times of CR's door and minimize the contamination extent of clean area.

- ◆ With the interlock function, electrical interlock or mechanical interlock is optional.
- ◆ Showering and cleaning function are optional.
- ◆ UV light is optional.
- ◆ Window type, desk type and floor type are optional.
- ◆ Interphone is optional.
- ◆ Unpowered or powered roller convey function is optional.

TYPE IDENTIFICATION



STANDARD PASS BOX

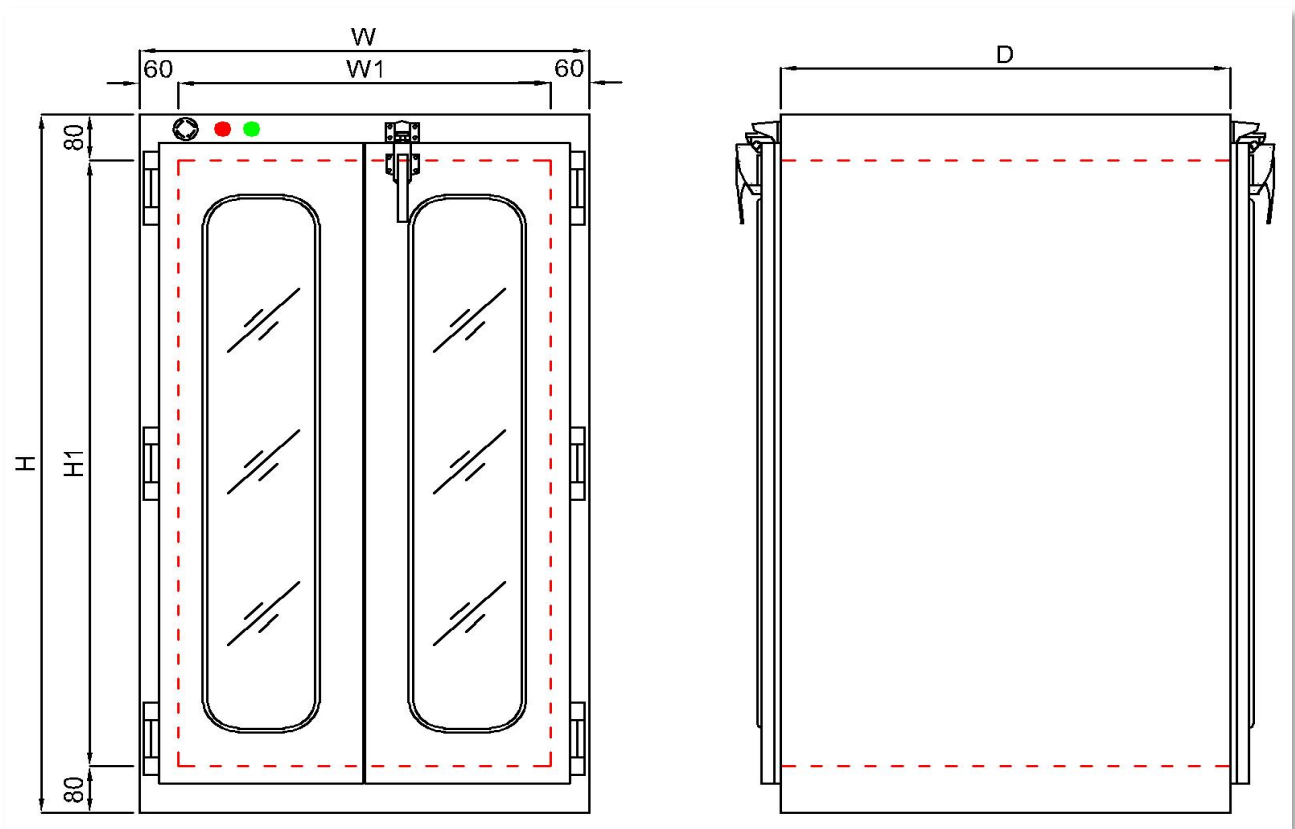


GENERAL SPECIFICATIONS				
MODEL	CPB-ES404040S	CPB-ES505050S	CPB-ES606060S	CPB-ES608060S
External Dimension (WxHxD) (mm)	570x490x400	670x590x500	670x690x600	670x890x600
Internal Dimension (WxHxD) (mm)	400x400x400	500x500x500	600x600x600	600x800x600
Interlock	Electric control, built-in type.			
Body Construction	1.2t powder painting steel or 1.2t SUS 304			
Door Construction	SUS Stainless Steel c/w 5mm/t glass view window			
Power Consumption (KW)	0.1			
Power Supply	AC 1Ø 220V/50Hz			

*** Custom-built dimensions & specifications are also acceptable.



DOUBLE DOOR PASS BOX

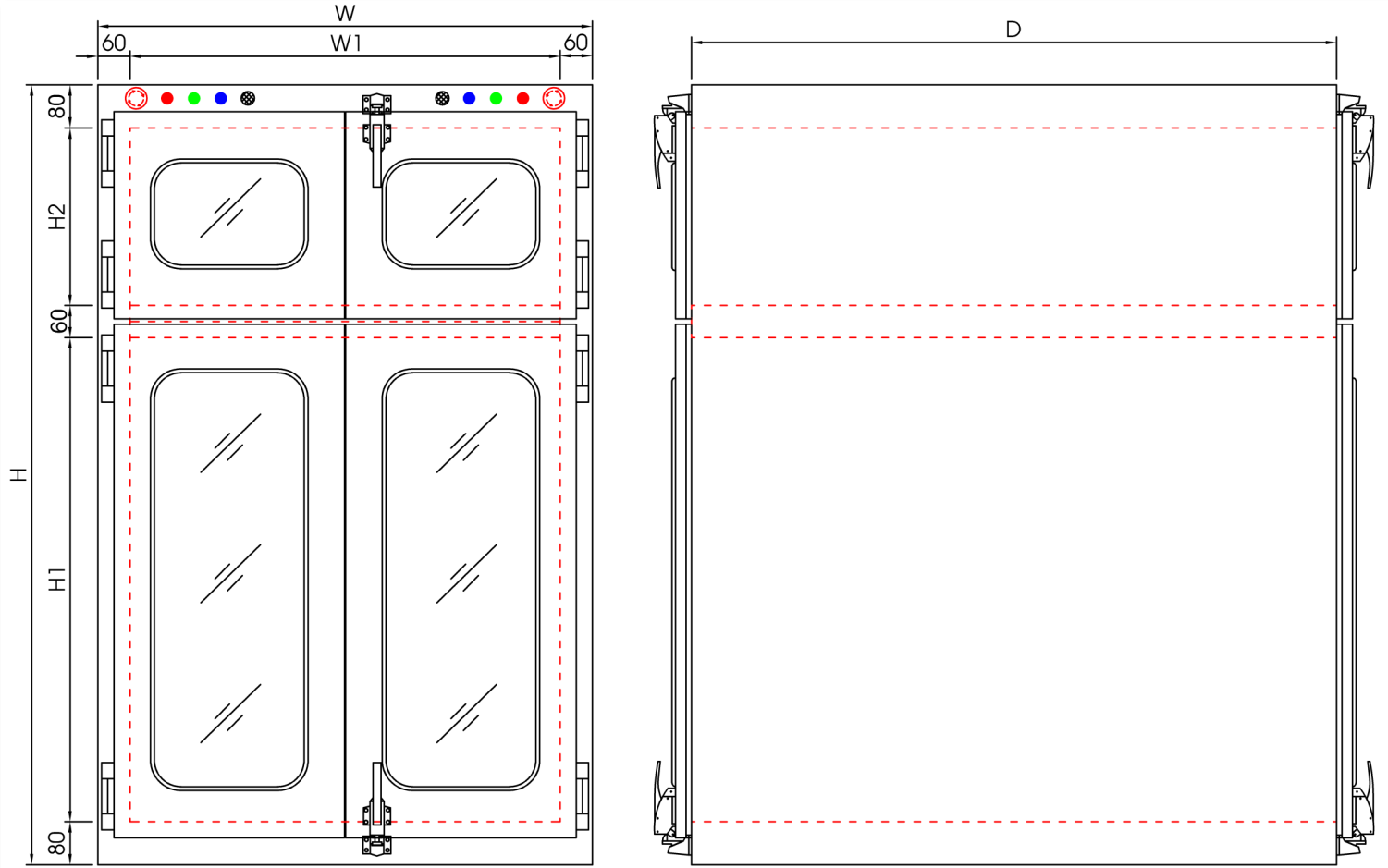


GENERAL SPECIFICATIONS

MODEL	CPB-ED6011070S	CPB-ED8011080S	CPB-ED8012080S	CPB-ED9012080S
External Dimension (WxHxD) (mm)	720x1260x700	920x1260x800	920x1360x800	1020x1360x800
Internal Dimension (WxHxD) (mm)	600x1100x700	800x1100x800	800x1200x800	900x1200x800
Interlock	Electric control, built-in type.			
Body Construction	1.2t powder painting steel or 1.2t SUS 304			
Door Construction	SUS Stainless Steel c/w 5mm/t glass view window			
Power Consumption (KW)	0.1			
Power Supply	AC 1Ø 220V/50Hz			

*** Custom-built dimensions & specifications are also acceptable.

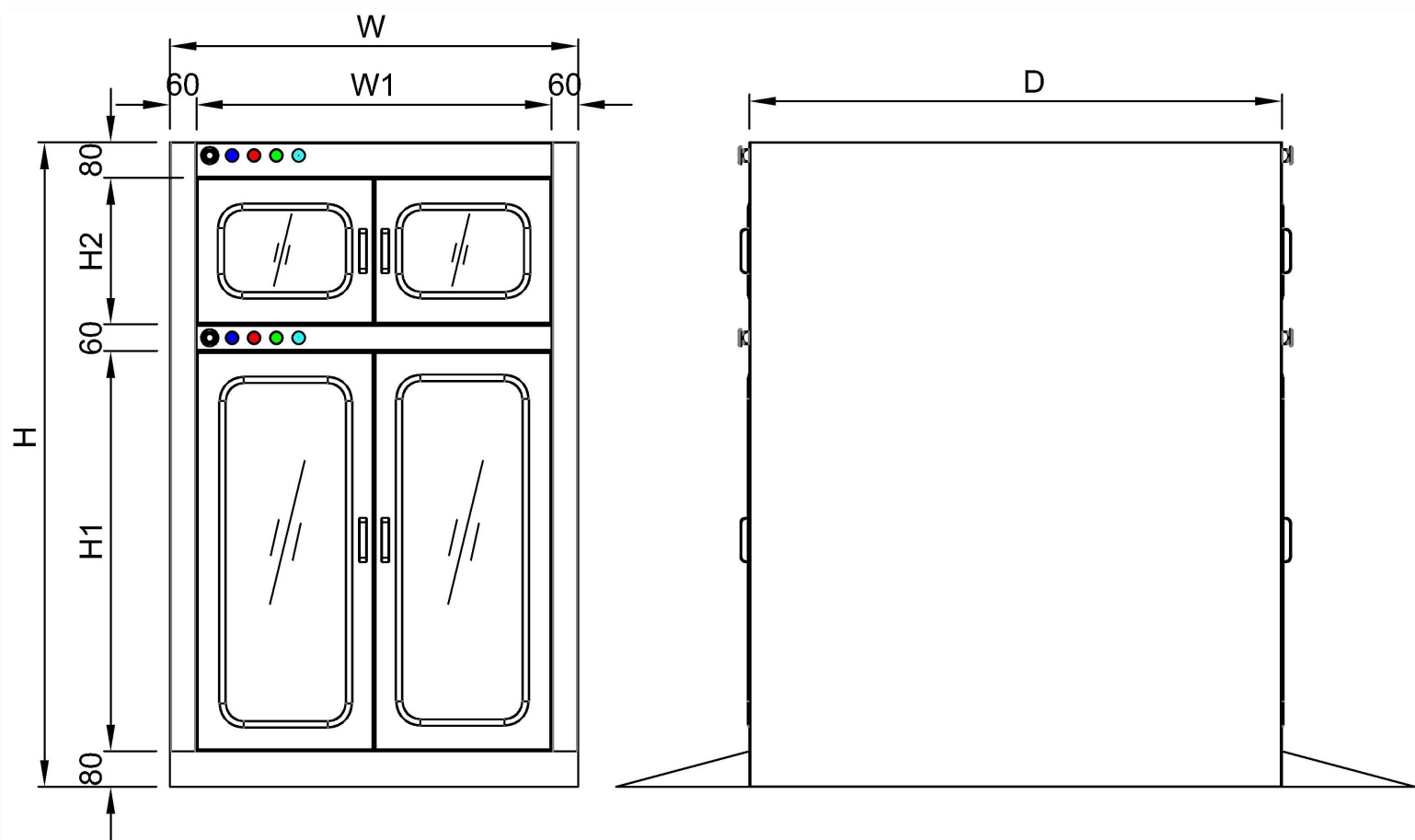
MULTI LAYER PASS BOX



GENERAL SPECIFICATIONS				
MODEL	CPB-EL709080S	CPB-EL809080S	CPB-EL7090100S	CPB-EL8090120S
External Dimension (WxHxD) (mm)	820x1470x700	920x1470x800	820x1470x800	920x1470x800
Internal Dimension Layer 2 (WxHxD) (mm)	700x350x800	800x350x800	700x350x1000	800x350x1200
Internal Dimension Layer 1 (WxHxD) (mm)	700x900x800	800x900x800	700x900x1000	800x900x1200
Interlock	Electric control, built-in type.			
Body Construction	1.2t powder painting steel or 1.2t SUS 304			
Door Construction	SUS Stainless Steel c/w 5mm/t glass view window			
Power Consumption (KW)	0.25			
Power Supply	AC 1Ø 220V/50Hz			

*** Custom-built dimensions & specifications are also acceptable.

CART PASS BOX



GENERAL SPECIFICATIONS				
MODEL	CPB-EL709080S	CPB-EL809080S	CPB-EL7090100S	CPB-EL8090120S
External Dimension (WxHxD) (mm)	820x1470x700	920x1470x800	820x1470x800	920x1470x800
Internal Dimension Layer 2 (WxHxD) (mm)	700x350x800	800x350x800	700x350x1000	800x350x1200
Internal Dimension Layer 1 (WxHxD) (mm)	700x900x800	800x900x800	700x900x1000	800x900x1200
Interlock	Electric control, built-in type.			
Body Construction	1.2t powder painting steel or 1.2t SUS 304			
Door Construction	SUS Stainless Steel c/w 5mm/t glass view window			
Power Consumption (KW)	0.25			
Power Supply	AC 1Ø 220V/50Hz			

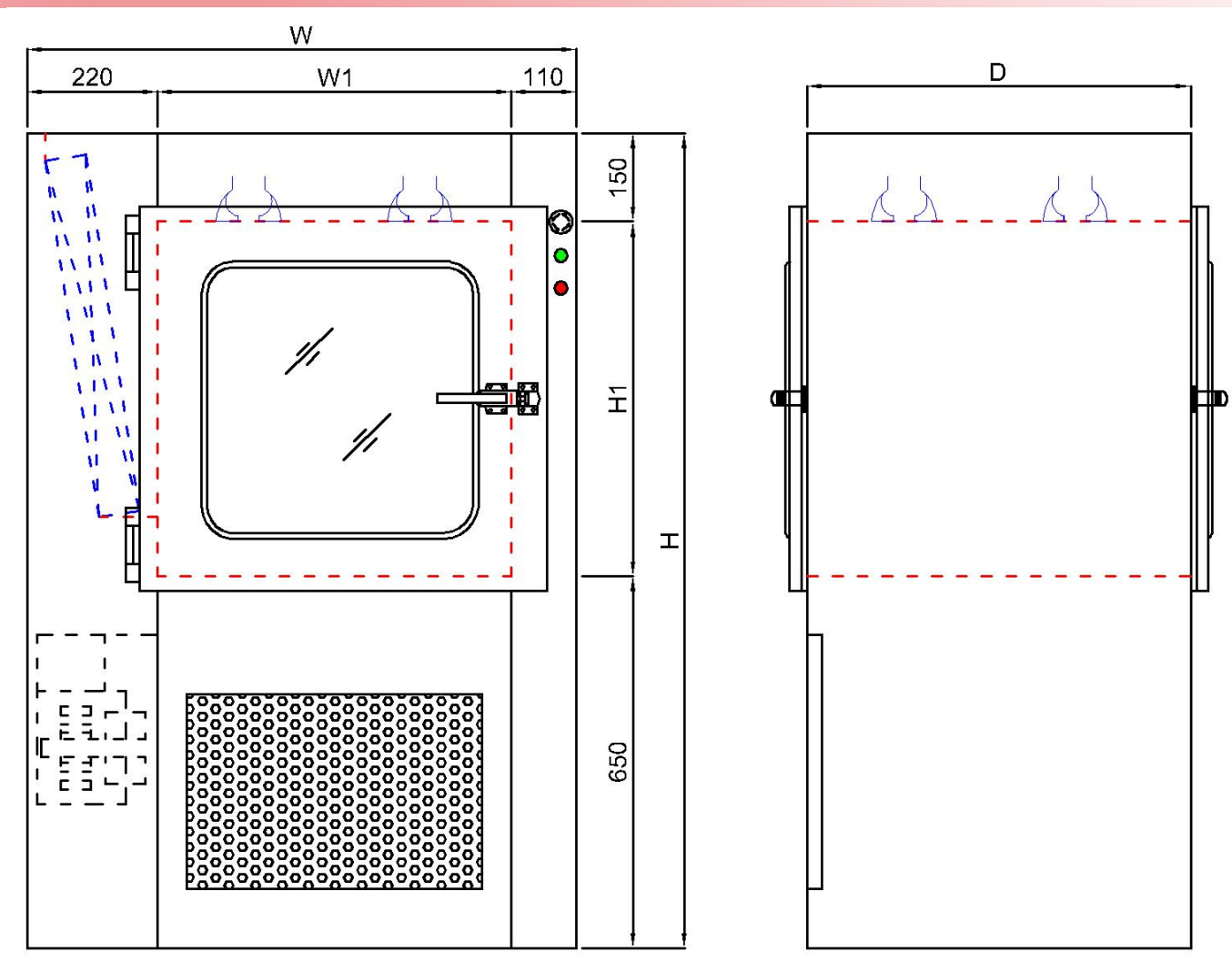
*** Custom-built dimensions & specifications are also acceptable.

AIR SHOWER PASS BOX DYNAMIC TYPE

- ◆ Material: Stainless steel SUS304
- ◆ Door Control Method: Mechanical/electronic interlock, stable and durable
- ◆ High-pressure centrifugal fan specialized for purification is installed on the top of pass box.
- ◆ Supply/return air system with stainless steel air shower nozzles on the top, 3-5m/s of air velocity.
- ◆ Tertiary filtration with pre-filter, medium filter, and non-clapboard HEPA filter. Efficiency: H13, $\geq 99.995\%$ @ 0.3 micron particles.
- ◆ Air supply on the top and air return on the bottom, cleaning off dust and dirt particles from material transfer.
- ◆ It enables materials to be moved between the clean room and other parts without damaging the cleanliness level of the products or materials, and also protect the surrounding area clean.
- ◆ Soft switch control of UV lamp, fan, power, door open, and setting.
- ◆ Perspective windows on both sides of door, excellent surface flatness and smoothness without welding spot.
- ◆ Arc shaped inner bottom which is to avoid forming dust, ensures the beautifulness and easy maintenance.
- ◆ This air shower pass box contains one differential pressure gauge.



AIR SHOWER PASS BOX



GENERAL SPECIFICATIONS

MODEL	CPB-EA505050S	CPB-EA606060S	CPB-EA707060S	CPB-EA808060S
External Dimension (WxHxD) (mm)	830x1300x560	930x1400x660	1030x1500x660	1130x1500x660
Internal Dimension (W1xH1xD) (mm)	500x500x500	600x600x600	700x700x600	800x800x600
Velocity (m/s)	20-25			
Number of nozzle	4	4	4	4
Air shower duration (second)	Default 12 seconds (Adjustable)			
Pr filter	85% arrestance and 20% efficiency			
Hepa filter	99,99% at partial size 0.3mm			
Blower	1 set	1 set	1 set	1 set
Interlock	Electric control, built-in type.			
Body Construction	1.2t powder painting steel or 1.2t SUS 304			
Door Construction	SUS Stainless Steel c/w 5mm/t glass view window			
Power Consumption (KW)	0.75			
Power Supply	AC 3Ø 380V/50Hz			

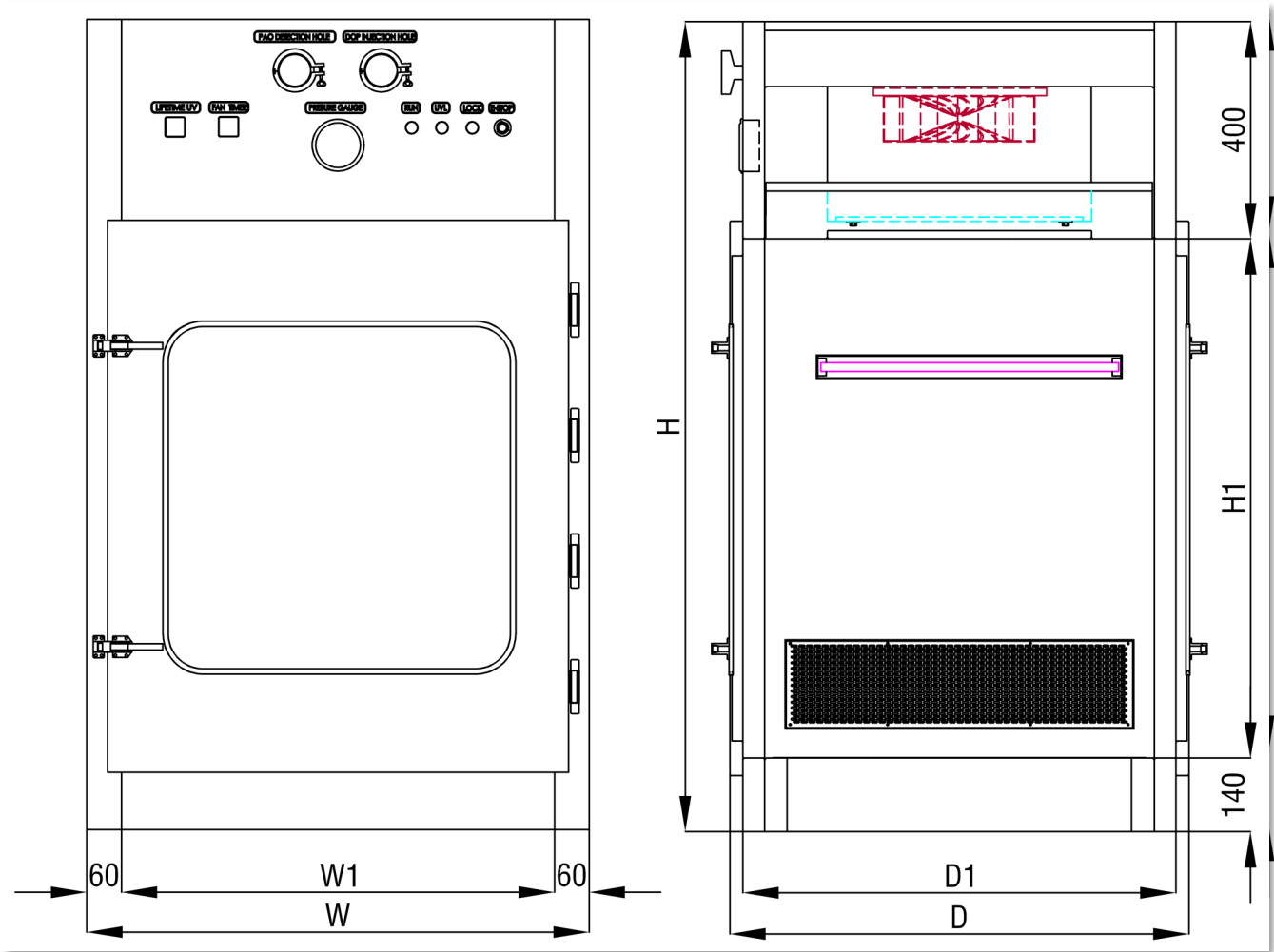
*** Custom-built dimensions & specifications are also acceptable.

CLEAN ROOM PASS BOX DYNAMIC TYPE

1. Material: Stainless steel SUS304
2. Door Control Method: Mechanical/electronic interlock, stable and durable
3. High-pressure centrifugal fan specialized for purification is installed on the top of pass box.
4. Supply/return air system with perforated stainless steel on the top/wall, 0.45-0.65m/s of air velocity.
5. Tertiary filtration with pre-filter, medium filter, and non-clapboard HEPA filter. Efficiency: H14, $\geq 99.995\%$ @ 0.3 micron particles.
6. Air supply on the top and air return on the bottom, cleaning off dust and dirt particles from material transfer. It enables materials to be moved between the clean room and other parts without damaging the cleanliness level of the products or materials, and also protect the surrounding area clean.
7. Soft switch control of UV lamp, fan, power, door open, and setting.
8. Suitable Class 100
9. Arc shaped inner bottom which is to avoid forming dust, ensures the beautifulness and easy maintenance.
10. This Cleanroom pass box contains one differential pressure gauge, D.O.P test port.



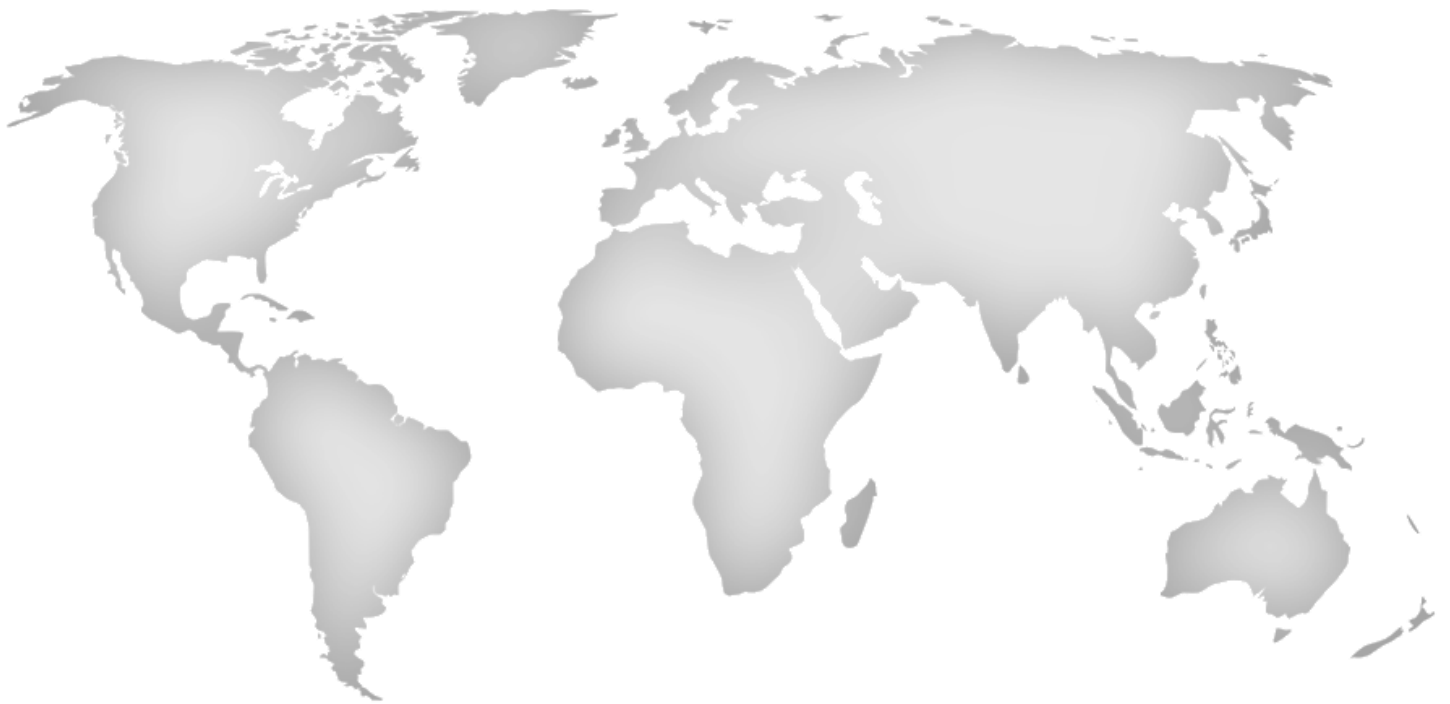
CLEANROOM PASS BOX



GENERAL SPECIFICATIONS

MODEL	CPB-ER505050SU	CPB-ER606060SU	CPB-ER707070SU	CPB-ER808080SU
External Dimension (WxHxD) (mm)	620x1040x560	720x1140x660	820x1240x760	920x1340x860
Internal Dimension (W1xH1xD) (mm)	500x500x500	600x600x600	700x700x700	800x800x800
Velocity (m/s)	≥ 0.4			
Pr filter	85% arrestance and 20% efficiency			
Hepa filter	99,99% at partial size 0.3mm			
Blower	1 set	1 set	1 set	1 set
Interlock	Electric control, built-in type.			
Body Construction	1.2t powder painting steel or 1.2t SUS 304			
Door Construction	SUS Stainless Steel c/w 5mm/t glass view window			
Power Consumption (KW)	0.75			
Power Supply	AC 1Ø 220V/50Hz			

*** Custom-built dimensions & specifications are also acceptable.



CLEANROOM VIETNAM JOINT STOCK COMPANY

290/54 No Trang Long Street, Ward 12, Binh Thanh District, Ho Chi Minh City

Tel +84.028.36204580

Hotline 0972 040 898

www.cleanroomvietnam.vn

info@cleanroomvietnam.vn